



Pisa2[®]

1-800-UNILOCK | UNILOCK.COM

UNILOCK
PAVERS & WALLS

PISA2[®]

CLASSIC



GRANITE



MAHOGANY



NATURAL



SIERRA

PRODUCT ATTRIBUTES

Visual Appearance	The built-in setback design of Pisa2 automatically forms the correct slope, ensuring a highly stable retaining wall. Utilizing the product's tapered components, you can form curved walls and steps. Classic tongue and groove for easy install.
Finish	Split / Rock-faced.

PRODUCT SPECIFICATIONS



STANDARD
8 x 12 x 6"
200 x 300 x 150mm



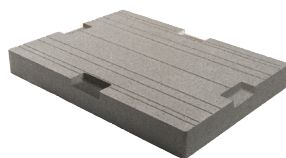
TAPERED
8 x 12 x 6"
200 x 300 x 150mm



CORNER
8 x 12 x 6"
200 x 300 x 150mm



24" COPING
12 x 24 x 3"
300 x 600 x 75mm
See Steps, Treads & Coping section page 149 for more details



U-GRIP™ BASE PAD
14 x 19 x 2"
355 x 482 x 55mm

RECOMMENDED ADHESIVE



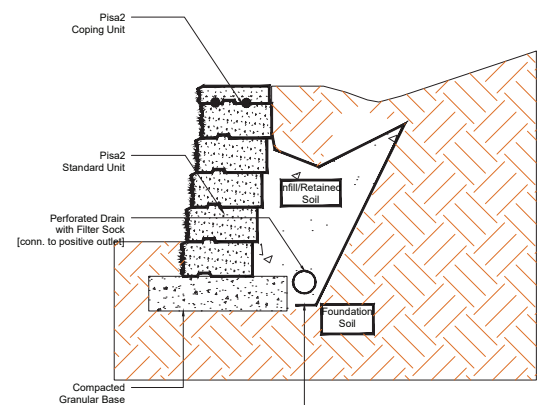
Gator Block Bond XP

- | VOC Compliant
- | Low odor- safe indoors or out
- | Fast curing- provides permanent overnight bond
- | Suitable for use in hot and cold environments
- | Non-shrinking- does not crack
- | Strong and versatile

Coverage: For 1/4" Bead (approx)

10 oz		28 oz	
m	ft.	m	ft.
-9	-31	-26	-86

GRAVITY WALL SECTION



Cross sections are examples, and must not be used for construction.

TECHNICAL INFORMATION

ASTM C 1372 Standard Specifications for Dry-Cast Segmental Retaining Wall Units

Conforms to:

- C140 for Absorption and Compressive Strength > 3000 PSI
- C1262 for Freeze Thaw Durability <1% mass loss
- C1372 Overall dimensional variations permissible for width, height and length +/-3 mm

Unilock standards exceed 5,000 PSI for Pisa2® products with:

- 4% absorption avg.
- 5% absorption max.
- Dimensional Accuracy +/-3 mm

Test results available upon request

Meets the U.S. Architectural & Transportation Barrier Compliance Board Slip-Resistance Surfaces Advisory Guidelines

PRODUCT DATA

Stones & Bundling	Face Feet Per		Linear Feet Per		Units Per		Per Bundle		Lbs Per	
	Bundle	Unit	Bundle	Unit	Bundle	Face Feet	Layers	Sections	Unit	Bundle
Gormley Manufacturing; U-Grip - Gormley Manufacturing										
Standard - Pre Split - Single Piece	24.00	0.333	47.90	0.665	72	3.00		4	48	3,456
Tapered - Double Unit	20.00	0.667	40.00	1.333	30	1.50		2	93	2,775
Corner Unit - Double Unit	20.00	1.667	-	-	12	0.60		2	96	1,152
24" Coping Unit	16.00	1.00	64.00	4.00	16	1.00	9		145	2,320
U-Grip Base Pad			85.39	1.581	54		9		46	2,500

Notes: Sold in full bundles or sections only. Maximum height - 36" (under optimum conditions) but can be engineered for walls that require to be higher. Higher walls can be achieved using geogrid reinforcement. Tapered units will allow for a minimum 5ft. outside radius. Automatic setback is ¾" per row. Engineering services are available. Contact your Unilock Territory Manager or call 1-800-UNILOCK for further information. *For custom options, please contact your Unilock Territory Manager.

APPLICATIONS



Garden Walls & Seat Walls

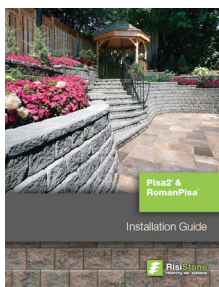


Retaining Walls



Steps

For coping options, we recommend using Natural Stone, Universal Coping or Pisa Coping.



Refer to the Pisa2 Installation Guide for more information.
<https://www.risistone.com/installation-guides/>

LEED INFORMATION

Materials & Resources: LEED V4:

Building Product Disclosure and Optimization

Sourcing of Raw Materials - Sourcing of Raw Materials and Extraction • 1 point

Sourcing of Raw Materials - Leadership Extraction Practices • 1 point

Material Ingredient Reporting - Material Ingredient Reporting • 1 point

Material Ingredient Reporting - Material Ingredient Optimization • 1 point

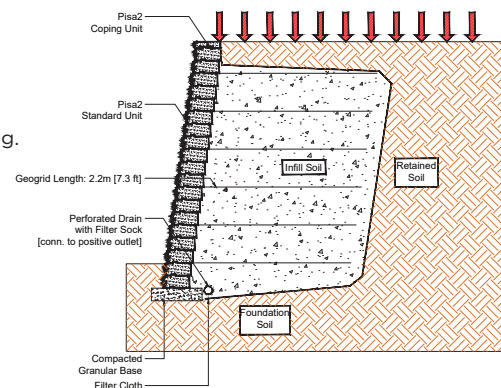
Environmental Product Declaration • 1 point

If required, summary test data shall be provided with the SRW Design and shall include:

a) SRW Unit shear strength as per ASTM D6916

b) SRW Unit - Geosynthetic Reinforcement connection strength as per ASTM D6638

GEOGRID WALL SECTION



Cross sections are examples, and must not be used for construction.

*Things to know:

Handling & Installation - Maximum height - 36" (under optimum conditions) but can be engineered for walls that require to be higher. Higher walls can be achieved using geogrid reinforcement. Tapered units will allow for a minimum 5ft. outside radius. To achieve this radius, you must use stones of the same taper on one layer, and stone of the opposite taper on the next layer. XL Tapered units allow for an 8 ft. radius.

For Pisa 2®, Unilock, through **Risi Stone Systems International**, can provide preliminary site engineering for most commercial projects. Soils information, site drawings, and loading requirements are some of the information details required in order to provide this preliminary site engineering.

Retaining wall engineering software is also available free of charge. Contact your local Unilock representative for details.

For more information please visit <https://www.risistone.com/product/pisa2/>.